

Cigarra

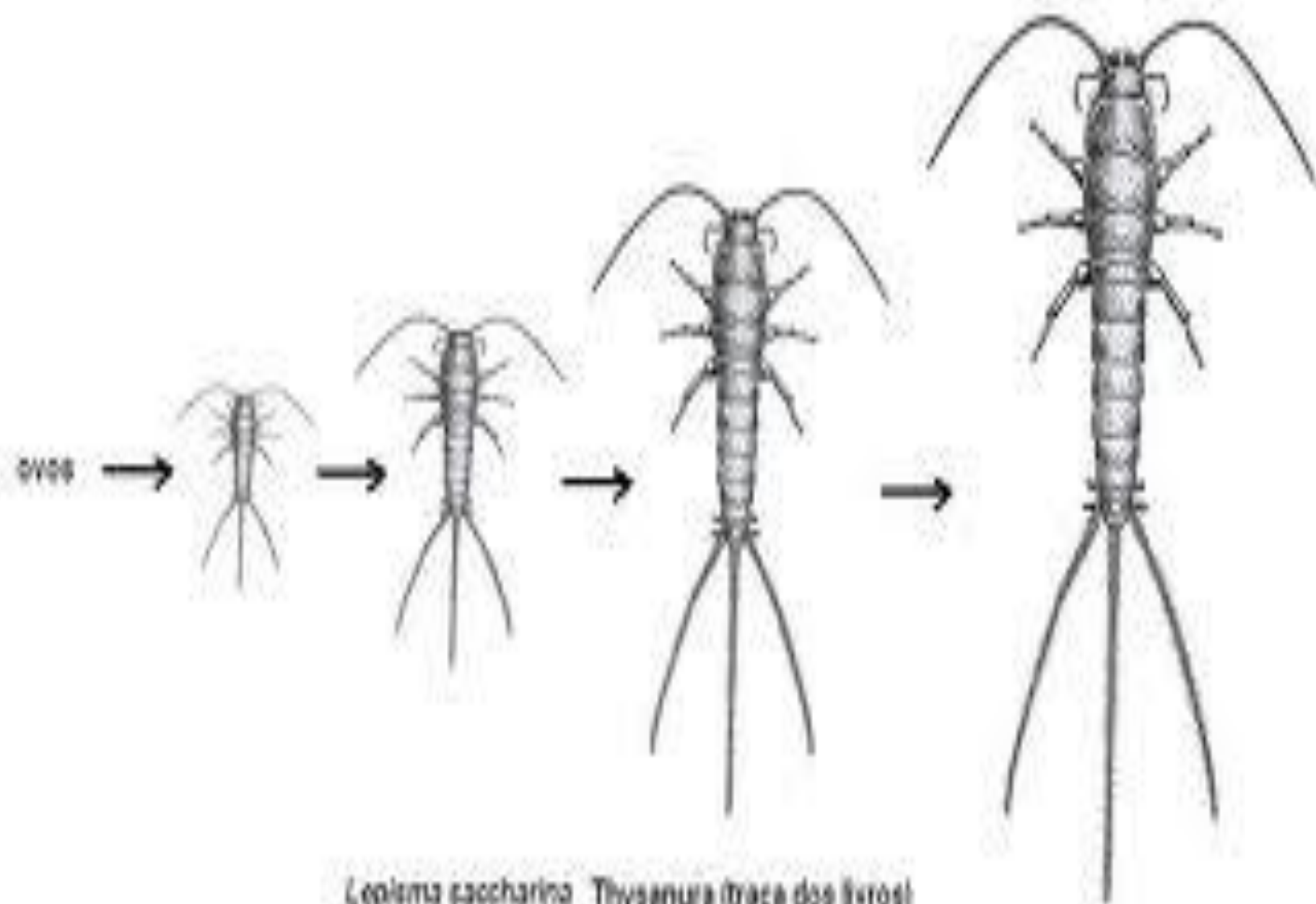


εκύβια

# FUVEST-2018

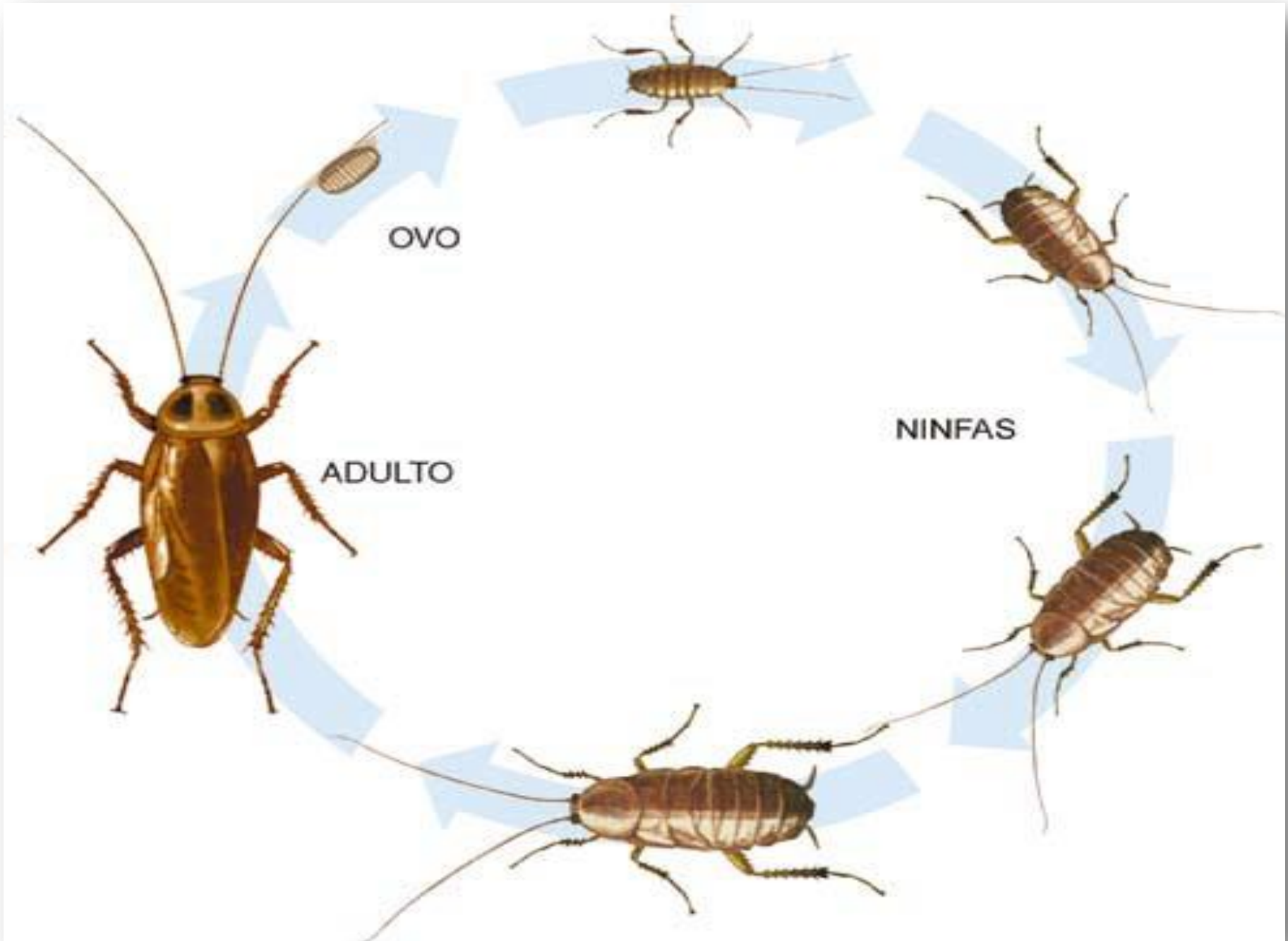
Gafanhotos alados (Orthoptera), formando nuvens, atacaram recentemente lavouras de mandioca, na região Norte do Brasil, trazendo prejuízos econômicos. Outra praga agrícola que vem causando danos para a economia é a lagarta-do-cartucho (Lepidoptera), que ataca plantações de milho e reduz a produção desse grão em até 50%.

- a) Como esses insetos são classificados quanto ao tipo de desenvolvimento e ao processo de metamorfose?
- b) Quais são as fases de desenvolvimento representadas pelo gafanhoto alado e pela lagarta?



*Lepisma saccharinum* Thysanura (traça dos livros)







©HEIDI & HANS-JÜRGEN KOCH  
[www.heidlhansKoch.com](http://www.heidlhansKoch.com)



A

B

C

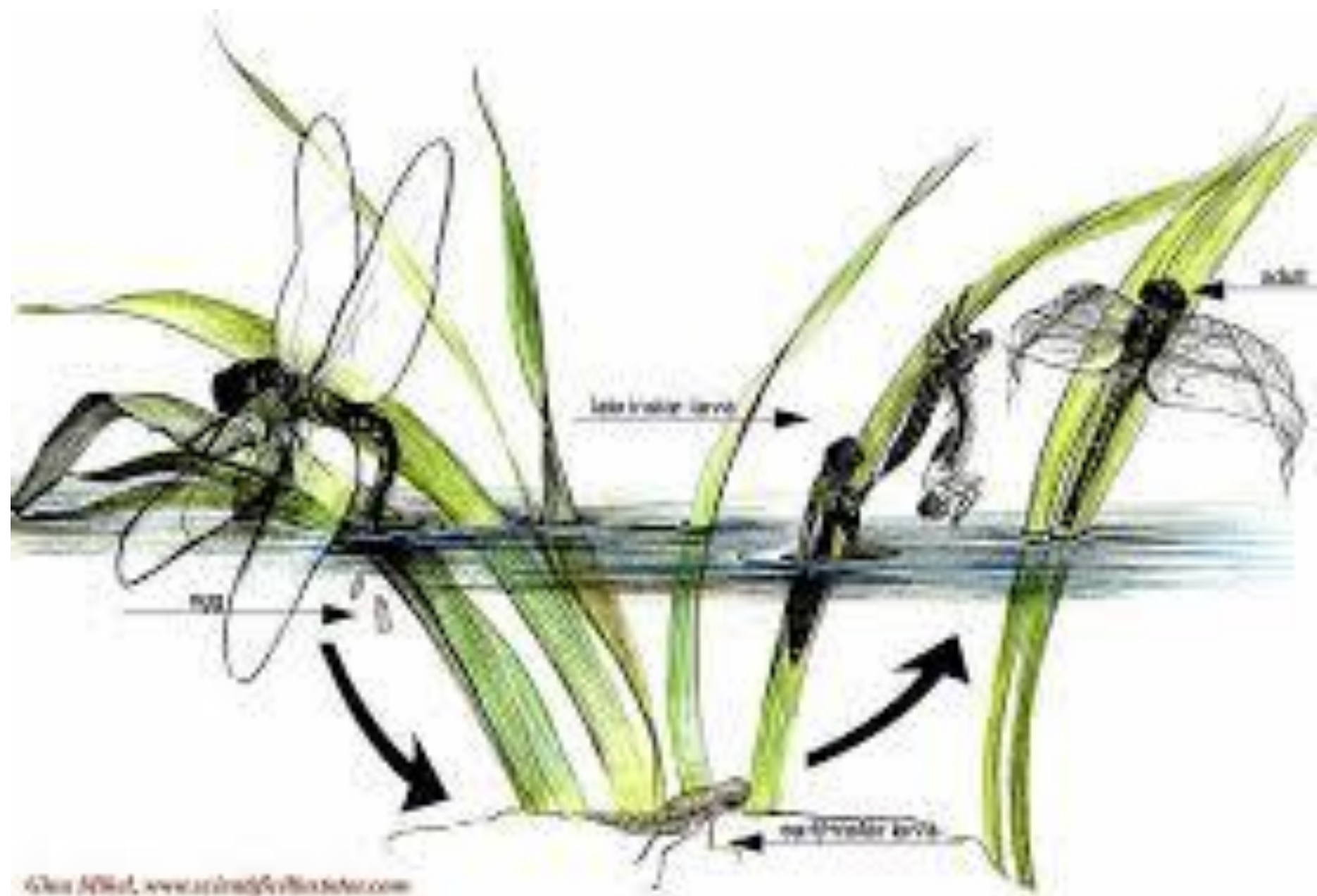
D

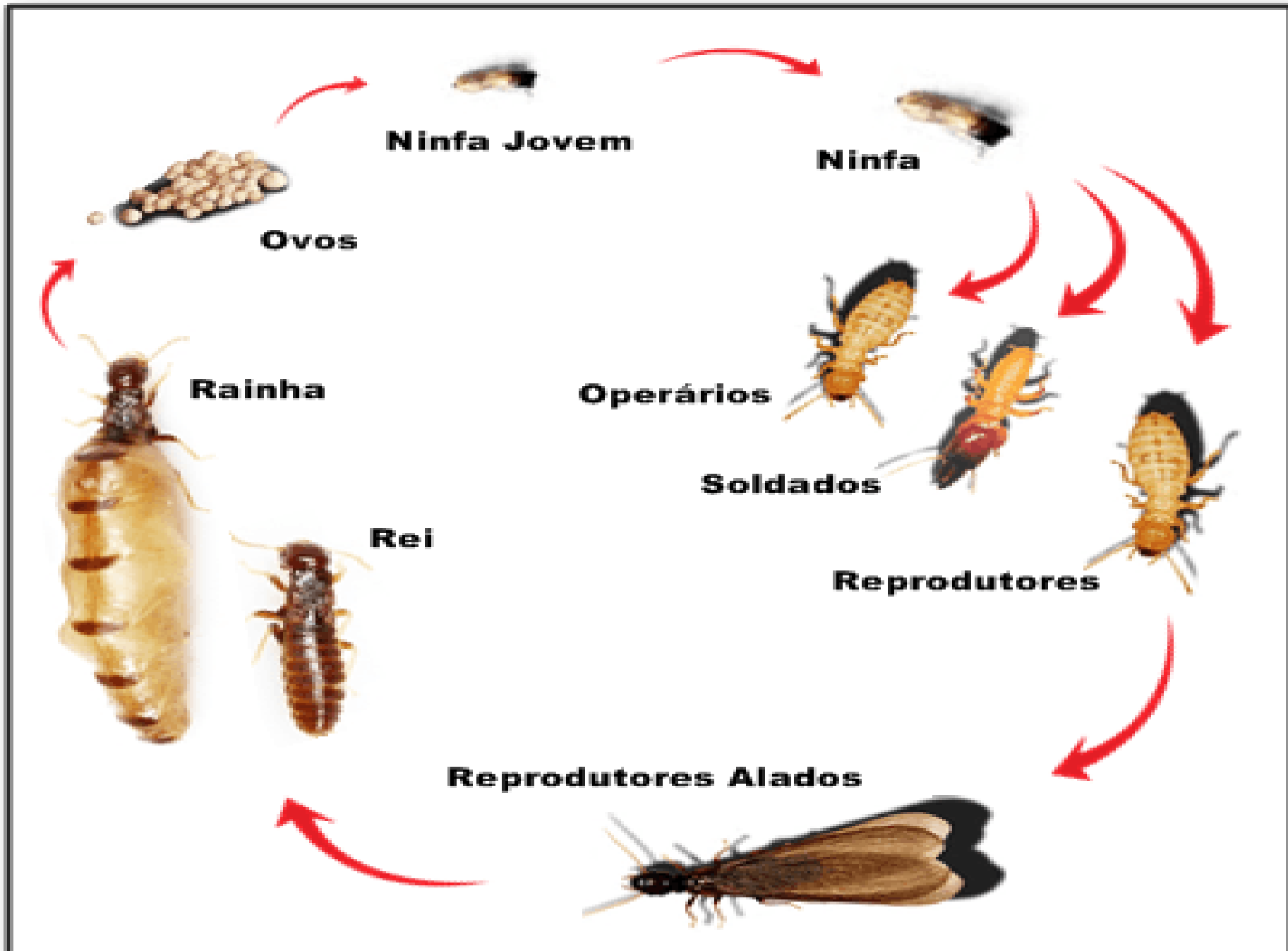
E







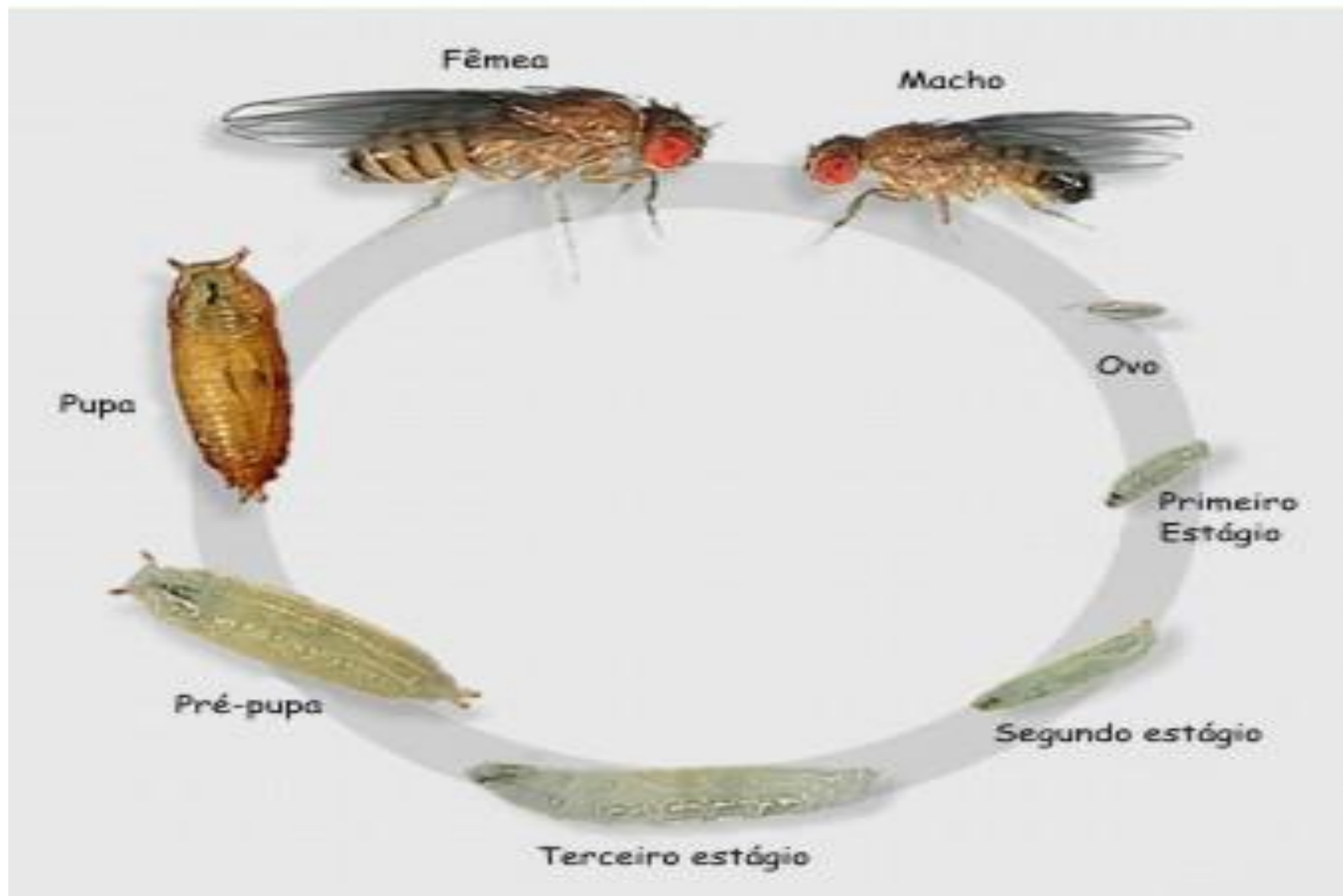




Ciclo de Vida Monarca



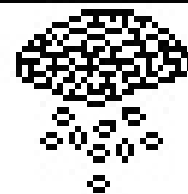
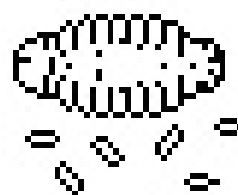
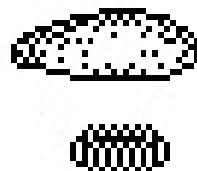
## O Ciclo de vida das moscas



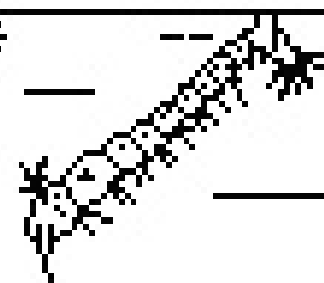
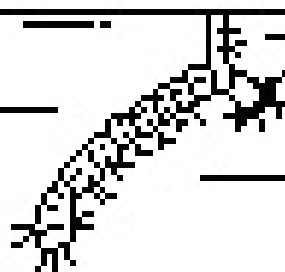




Ovos

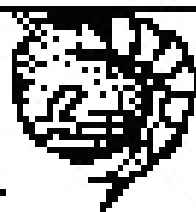


Larvas

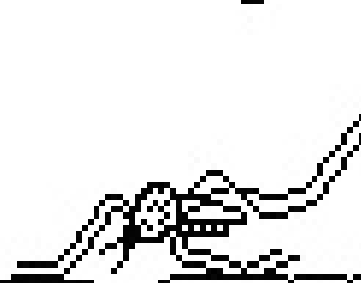
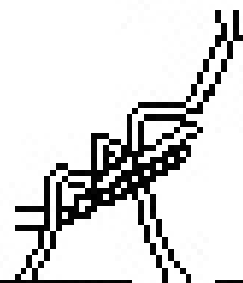
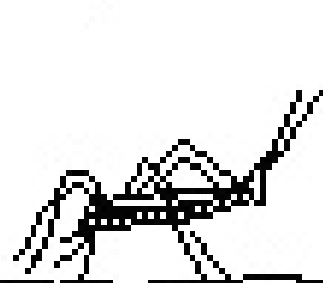


Superfície da água

Pupas



Adultos



Culex

Anopheles

Aedes



